

# ESTATE AUCTION

320 Gridiron Street, Fayette, MO

Saturday, June 25th, 2011 10a.m.

Settling the estate of our parents, we will be offering the following real estate and personal property at auction. Jim and Helen (Puckett) Thogmorton, better known as Dean and Mrs. T, were long time residents of Fayette. In 1959, Jim and Helen moved into this residence with their two daughters, Louann and Cathy. The family has more than 100 years of history with Central Methodist University and three generations of Central graduates. "Dean T" served for many years as the Dean of Students at Central Methodist, as well as the Dean of Alumni Affairs in his later years. He and Helen were known as the guiding force for generations of students, as well as consummate hosts. Helen's father, E.P. Puckett, was the long time Academic Dean of Central College (now CMU) and served as acting President three times. The family is very well known and well respected in the area.



This historic home built in 1907 is situated on a 157' x 86' well shaded lot on the secluded Gridiron Street just seconds from Central Methodist University.

**REAL ESTATE SELLS  
AT 12:00 P.M.**

**OPEN HOUSE  
SATURDAY, JUNE 4TH  
10:00A.M.—NOON  
WEDNESDAY, JUNE  
8TH 6:00—7:30P.M.**

There are 2300 sq. ft. +/- of living area. It has a wrap-around porch that leads into the front door. The house opens to a foyer with a grand oak stairway leading to the 2nd floor. The 2nd floor has 4 bedrooms & 1 bath with a balcony off 2 bedrooms. On the first floor, from the foyer through double pocket doors lies the spacious formal living room with windows overlooking the front porch and a beautiful bay window situated at the end of the room. Off the living room is the dining room which leads to the kitchen, music room and a sitting room attached to the second bathroom. In the kitchen is another bay window. The kitchen leads to the screened in back porch and back exit. The house has been updated with central air and has been well maintained over the years.

## - Antiques & Collectibles -

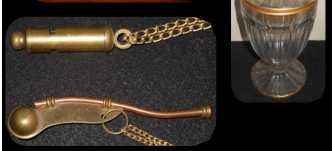
Sterling Flatware/Place Card Holders - Brass Navy Whistles - Early War Bayonet - Aqua Opalescent Vase - Winchester Fishing Reel - Wood Fishing Lures - Alsop & Turner Prescription Boxes Fayette- Sm. Limoges Pitcher - Dbl. Handled Pnt. Plate Prussia - Hull Pottery - Jadite Fire King Dish - KK Food Processor #12 - Spice Grinder - Wally Smith Pottery - Silver Overlay Sherberts/Pitcher - California Pottery - Hull Type Tea Pot - Satin Blue Pnt. Console - Shenanco Gravy Boat - Oriental Tea Set (WWII Era) - Large Pfalzgraft Set - Brass Oriental Flatware Set - Ladies Hats - Lee's Stag Handled Steel - Wood Car Music Box - Red/White Handled Kitchen Utensils - Planters (Frankoma, McCoy, Haegar) - Am. Fostoria Cake Plates - Pineapple Sugar Dish - Smith Taylor Transfer Ware - Lg. Plateau Mirror - Amber Cake Stand - Pedestal Cake Stand - Lg King Crown Compote - Pinch Top Pnt Lemonade - Ruby Red Punch Bowl Set & Bowls - Hicee Covered Candy Dish - Blown Glass Vinegar Cruet - Daisy & Button Pattern Glass - RC Versailles Muffineer - Candlewick Vase - Guantanamo Bay Pewter Plate - Crystal Rose Bowl - 1835 R. Wallace Flatware - Ornate Roger Bros. Serving Spoon - Roger Serving Set - Royal Wettin Vase - 2 Lg. Hurricanes - Miss America Vase - Crystal Imperial Candle Sticks - Tall Ribbed Vase - Crystal Candle Opera Set - Symphony China - Souvenir Plates - Cups & Saucers - Castlecourt Golden Grain China - Printers Tray - Milk Can - Costume Jewelry - Art Glass - Ring Dish - Muffin Iron - Tennis Racket - STL Globe 24" Measure Stick - Ele. Smelter Base Lamps - Toys/Stuffed Animals

## - Antique Furniture & Rugs -

Spn. Carved High Back Bed w/ 3 Drawer Marble Top Chest & Mirror - Vic. Settee - Qtr. Sawn Oak Buffet - Qtr. Sawn Oak Table w/ 5 Leaves - 8 Oak Chairs - Lab Table from T-Berry Smith Science Hall - Parlor Table w/ Marble Top - Vic. Rocker Slipper Chair - Dbl. Handled Washstand - 8'x11' Rugs (3) - Other Rugs - Oval Beveled Mirror Gold Trim - Qtr. Sawn Oak Lamp Table - Vic. Couch - E. Lake Vic. Chair - Music Stand - E. Lake Parlor Table - Marble-top 3 Drawer Chest - CMC Knee Hole Desk - Dean Puckett's Oak Desk - Serp. Wishbone Mirror Chest - Bird's Eye Maple Bedroom Set - Ladder Back Chair - Wicker Bustle Seat - Pnt. Chest - Tea Table w/ Removable Tray Top - Bent Wood Chairs - Art Deco Frame - Spn. Carved Bonnet Dresser Parts - Ornate Dresser Mirror (parts) - Spn. Carved Cane Bottom Rocker - Saddle Seat Oak Chair

## - Household & Appliances/Tools & Outdoors -

Kenmore Washer & Dryer - GE 4-Burner Ele. Stove (2 yrs. Old) - Kenmore Frig. - Sm. Microwave - Stereo w/ 5 Disc CD, Cassette, Tuner, Record - Tupperware - Pots & Pans - Pie Plates - Cleaning Supplies - Kitchen Appliances - Kitchen/Bed/Bath Linens - Bar Stools - Kitchen Utensils - Stemware - Snack Sets - Plant Stands - File Cabinet - SJB Wool Blanket - Luggage - Baskets - Picture Frames - Lamps - Seasonal Decorations - Fabric - Sewing Supplies - Beverage Tub - Circular Saw - Work Bench w/ Leg Vice - Limb Saw - Seeder - Old Butcher-Type Knives - Paint Supplies - Golf Clubs - Hand Tools - Shovels - Rakes - Brooms - Ice Saw - Various Hardware - Drill Bits - Shakespeare Fishing Reel - Lobster Trap Float - Sm. Vice - Oil Cans - Bait Bucket - Outdoor Figs.



**Terms:** 10% down day of sale, balance due at closing within 30 days, the family is motivated to sell but reserves the right to accept final bid. Cash or good check with positive ID. Statements made day of sale take precedence over all printed material or ads. Visit website for complete listing and additional photos.

**Directions:** From MO-240W turn Right on Elm St, Left on N. Mulberry, and Left on Corpew St. From MO-5 take N Church St, Turn Left on Corpew St.

**Seller: James "Dean T" & Helen Thogmorton Estate**



Cody Martin: 660-888-3460

Terry Quinlan: 660-888-9493

[www.martinauctioncompany.com](http://www.martinauctioncompany.com)

