



Presorted
Standard
U.S. Postage
PAID
Boonville, MO
Permit No. 389

ANTIQUUE AUCTION

Cooper County Youth Fairgrounds, Boonville, MO
Saturday, June 30th, 2018 10a.m.

Auctioneer's Note: This is a unique collection of antiques and primitives from a local estate. This auction is like taking a step back in time and is a must see! The extent of the auction will continue to grow as auction day approaches as many items were boxed and are still to be uncovered. Please plan to attend. **Directions:** Cooper County Youth Fairgrounds, 16899 Dunkles Rd, Boonville, MO (west of Boonville, off I-70 exit MO-Hwy 135, go east of Frontage Rd north of I-70 approximately 2 miles and go south over I-70 to fairgrounds. Watch for signs day of sale. **Terms:** Cash, valid check, Master Card/Visa (5% convenience fee) with proper ID. Not responsible for accident, theft or errors in advertising, statements made day of auction take precedence over ads and printed material. For additional info go to www.martinauctioncompany.com or call Cody at 660-888-3460.

PISTOLS - RIFLES - SHOT GUNS



RAILROAD COLLECTIBLES



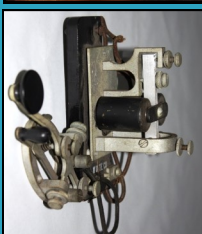
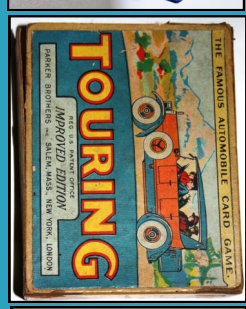
ADVERTISERS



PAPER GOODS



PRIMITIVES



GLASS & CHINA
 Glass Scottie Dog Paper Weight & Toothpick Holder - Vaseline Glass Clark's Gun Counter Stand - Vaseline Paperweight - Cobalt Shirley Temple Creamers - Donkey Candy Dish - Crystal Candelabra - Paperweights - Lg Glass Desk Organizer - Depression Glass - Toothpick Dispensers - Syrups - Butter Dishes - Casseroles - Egg Cups - Teapots/Tea Sets - Vintage Juice Sets - Piggy Banks

FURNITURE
 Walnut Eastlake Chair - Antique Child's School Desk - Folding Cast Iron Cobler's Stool w/ Oak Seat - Cast Iron Fountain Stool w/ Swivel Seat - Mahogany Lap Desks - Lg. Hand Hammered Copper Farmhouse Sink - Walnut Ladder Back Chair w/ Splint Seat - Oak Frame Upholstered Chair - Unfinished Dome Back Chests



MARTIN AUCTION COMPANY



www.martinauctioncompany.com

Cody Martin
660-888-3460

Teresa Martin
660-888-9518

Terry Quinlan
660-888-9493



Visit our website to sign up for email notifications. Receive auction notifications, electronic copies of sale bills, auction updates and more.



GUNS

Pistols: Ruger P9&DC 9mm Auto – High Standard Model B .22 Auto Mfg 1939 – Heritage Rough Rider .22lr/.22mag NIB – Ruger Single Six .22lr/.22mag, 9½” Brl – S&W Model 1917 .45 Revolver Marked U.S. Property – Springfield XD-S .45 Auto, Bi-Tone – **Rifles:** Stevens Model 70 .22, Visible Loading Repeater – Stevens Little Scout .22 Single Shot – Stevens Marksman .22 Tip-up – SKS 7.62 w/ Bayonet, Matching Numbers – Winchester Model 70 .300 WinMag, Black Composite w/ Nikon 3x9 Scope – **Shot Guns:** Beretta 686 Silver Pidgeon 20ga O/U, Like New – Browning A5 Light 12, Belgium, 26” Ventrib, Modified - Browning 2000 12ga, 26” Ventrib, Improved – Winchester Mod 12, 20ga., 26” Modified – Single Shot Shotguns (wall hangers)



RAILROAD COLLECTIBLES

MKT Caboose Stove – Enamel Railway Express Agency Sign - MKT Brakeman's Hat w/ Pin – Katy Engineer's Cap - MKT, MoPac, Chicago & Alton, Adams & Westlake Lanterns - Adams & Westlake Wall Mount Caboose Light – Brass Pullman Sleeper Light – Genesy & Conger Elec. Brakeman's Lantern – Brass RR Torch – MKT Torch w/ Handle – MKT Iron Desk Lamp Holder – Early Signal Torches – Switch Keys – Cast Brass W.F. Smith Coal Car Checks – MKT Oil Can/Oiler – Lg. MKT Kerosene Can – AT & SF RR Oil Can – MKT RR Metal Cup – MP RR Wire Brush – Red Metal Signal Bond Box – MKT Coal Fork, Shovel, Monkey Wrench – Spare MKT Stove Door - MKT Medicine Bottle, Sedalia - Hamilton Watch Railroad Time Keeper's Book 1910 – Pullman Thermos & Clothes Hanger – Katy Southwest Fan – 1904 MKT Postcard & Others - Framed Prints (“A Katy Train Passing Denison Texas” by Fogg, “Katy Texas Special in the Glory Days of Steam”) – Early Manhattan Elec. Supply Telegraph – J.H. Bunnell Telegraph w/ Key – Union Pacific Work Hat – Assorted RR Pencils



ADVERTISERS

Sinclair Gas Pump Globe - Old Judge Coffee Jars – Chico's Spanish Peanuts Jar – Beich's Counter Jar – Pepsi Wall Mount Opener – R.B. Rice Lard Pales – Coffee Can – Spice Tins - Sunshine Biscuit Tin w/ Glass Lid – Various Oil Cans – Banks (Patton's Paints, Betsy Ross Tea, Rival Dog Food, Grapette Glass Clown, Lucky Joe Mustard, Wooden Jefferson City Savings) – Milk Bottles (Audrain County, Central Dairy, Craig's Dairy, Country Club, University of MO, Whit Eagle) – Frozen Gold Ice Cream Tray – Soda Bottles (Beech-Nut, Coca Cola, Columbia Bottling, Cheer-up, Dr. Pepper, O-So Grape, Orange Crush, Royal Crown, Royal Purple, Whistle, Wink)

TOYS



DRUG STORE COLLECTIBLES

1800's Pill Rolling Machine – Early Cast Iron Druggist's Cork Press – Vintage Drug Bottles – Apothecary Jars – Fountain Ice Cream & Soda Glasses – Rexall Counter Jar – Dr. Kilmer's Swamp Root Remedy Wooden Box – Vick's Va-Tro-Nolenamal Sign – Hand Blown Medical Syringes – Patent Medicines & Appliances (many in original packaging) – Straight & Safety Razors – Early Cast Iron Swivel Seat – Rexall Countertop Ashtray



PRIMITIVES, ANTIQUES & COLLECTIBLES

Parlor Stove Fulton NO 16 J&S Pekcham 1860 – McCormick-Deering & IH Lye Solution Crocks - Aladdin Lamps - Civil War Confederate Officer's Foot Sword (repo) - 1930's Western Electric Wall Phone – 1950's Kellogg Rotary Phone – Ludwig Banjo – Cranberry Swirl Hall Lamp – Hand Crank Moviegraph Machine – Beaded Purse - Paper Mache Dress Form on Cast Iron Stand – LG. French Coffee Bean Dispenser – Bird Cages – Political Pins & Memorabilia – Blue Mason Jars – Spun Copper Tea Kettle – Glass Rolling Pins – Grocer's Scoops – Kraut Cutters – Kitchen Utensils & Kitchen Wares – Swan's Down Cake Pans – Match Safes – Hammered Aluminum – Pottery & Stoneware – Graniteware – Canister Sets – Salts & Peppers – Spice Jars – Spun Brass Parts for Beds/Lamps – Baskets – Porcelain Top for Hoosier Cabinet – Cast Iron Coal Tongs – Brass Fireplace Andirons & Surround – Buttons/Beads – Vintage Lamps – Reverse Painted Lamp Shades – Ideal #2 Dark-room Lantern w/ Red & Amber Lenses – Cast Iron Elk/Horse Bank – Monroe City Centennial Cigar Box & Spoon – Local Collector Plates – Vintage Sleigh Bells – Vintage Holiday Décor - Paper Mache Jack-o-Lanterns - Wall Mount Coffee Grinders – Cherry Pitters – Metco Food Grater w/ Glass Bottom – 2 Qt Food Press – Pudding Molds – Blue Metal Biscuit Tin – Lg. Enterprise Sausage Press – Keystone Cast Iron Wall Mounted Egg Beater – Universal Hand Crank Cake Mixer – Wooden Hand Crank Clothes Wringer – Sad Irons & Holders – Fluting Irons – Daisy Churn Top – Wood Stove Lid Handles – Metal Cake Carriers, Cookie, Candy & Cake Tins – Wooden & Iron Shoe Lathe & Forms – Hoop Skirt Frame – Lehman Bros Iron Foot Warmer – Dunlap Cream Whip Bowl & Beater – 18” Wrapping Paper Dispenser – Cast Iron String Dispenser w/ Cutter – Brass Toilet Paper Holders – Vintage Roach/Mouse/Rat Traps – Cast Iron Rope Maker – “Little Drum” Table Top Washing Machine – Women's Relief Corp Cast Iron Flag Stand c1883 – Cast Iron Shelf Brackets – Folding Wooden Clothes Drying Racks – Wooden Barrels & Storage Drums – Stereoscope w/ Slides – Lightning Rod & Balls – Victorian Hat Pin Display – Vintage Straw Boater – Taylor's Sleeve Boards – Shoe Button Fasteners – Bookends – Soapstone Foot Warmers – Wooden Hand Crank Clothes Wringer – Lg. Wooden Pulley – Bill Holders – Twist Door Bells – Wall Pockets



PAPER GOODS

David Bradley Farm Implements 1914 – John H Hanneke Druggist Advertiser – Harry T. Manion Boonville, MO Advertiser - Post Card Albums – 1952 Howard County Platte Book - Early 1900's Magazines (The Red Cross Mag., Women's World, Illustrated Mechanics, The Gentle Woman, Women's Home Companion, The Girls World, Young People, Breeders Gazette, The MO Ruralist, Cappers, The Observer, People's Popular Monthly, The Bargain Counter, The Designer, The Deliniator) - Calendars (Boonville Mills Co 1940, Brownsberger's 1944, Genola Bros 1940, Glasgow Hardware 1956, Grigsby Bros 1949, L.W. Brockman 1948, Stallman Bros 1952) – Early 1900's Newspapers (Democrat-Leader, St. Louis Star, Howard County Advertiser, Glasgow Missourian) – Stephens, Hardin & Christian College (late 1800's, early 1900's) - Vintage Local Phone Books - Various Local Paper Goods (Armstrong, Boonesboro, Boonville, Chillicothe, Clinton, Columbia, Fayette, Glasgow, Marshall, Moberly, Monroe City, New Franklin, Salisbury) – Bingham Art Book – Lg. Selection Comic Books – Golden Books, Wonder Books – Old Books – Old Road Maps – Almanacs – Scrap Books – The Boone County Album 1820-1971 – Images from Columbia's Past 1865-1945 – Vintage Valentines/Christmas Cards

SPORTING GOODS, TOBACCO & LIQUOR

Star Tobacco Cutter – Tobacco Tins – Cigar Molds – Tobacco Knife – Wooden Cigar Boxes – Wooden Plug Tobacco Boxes – Playboy Club Ashtrays – Prohibition Era Liquor Bottles – Wooden I.W. Harper Prohibition Era Wooden Liquor Crate – 1954 Etched Glass I.W. Harper Decanter – Green Glass Minnow Trap – Shapleigh Bait Casting Reel w/ Telescoping Metal Rod – Southbend Bamboo Fly Rod – Southbend Fiberglass Fly Rods(2) – Wooden Shaft Golf Clubs – Wooden Ammunition Boxes – Vintage Ice Skates – 1930s Wooden Wheel Roller Skates – Vintage Local & Regional Felt Pennants